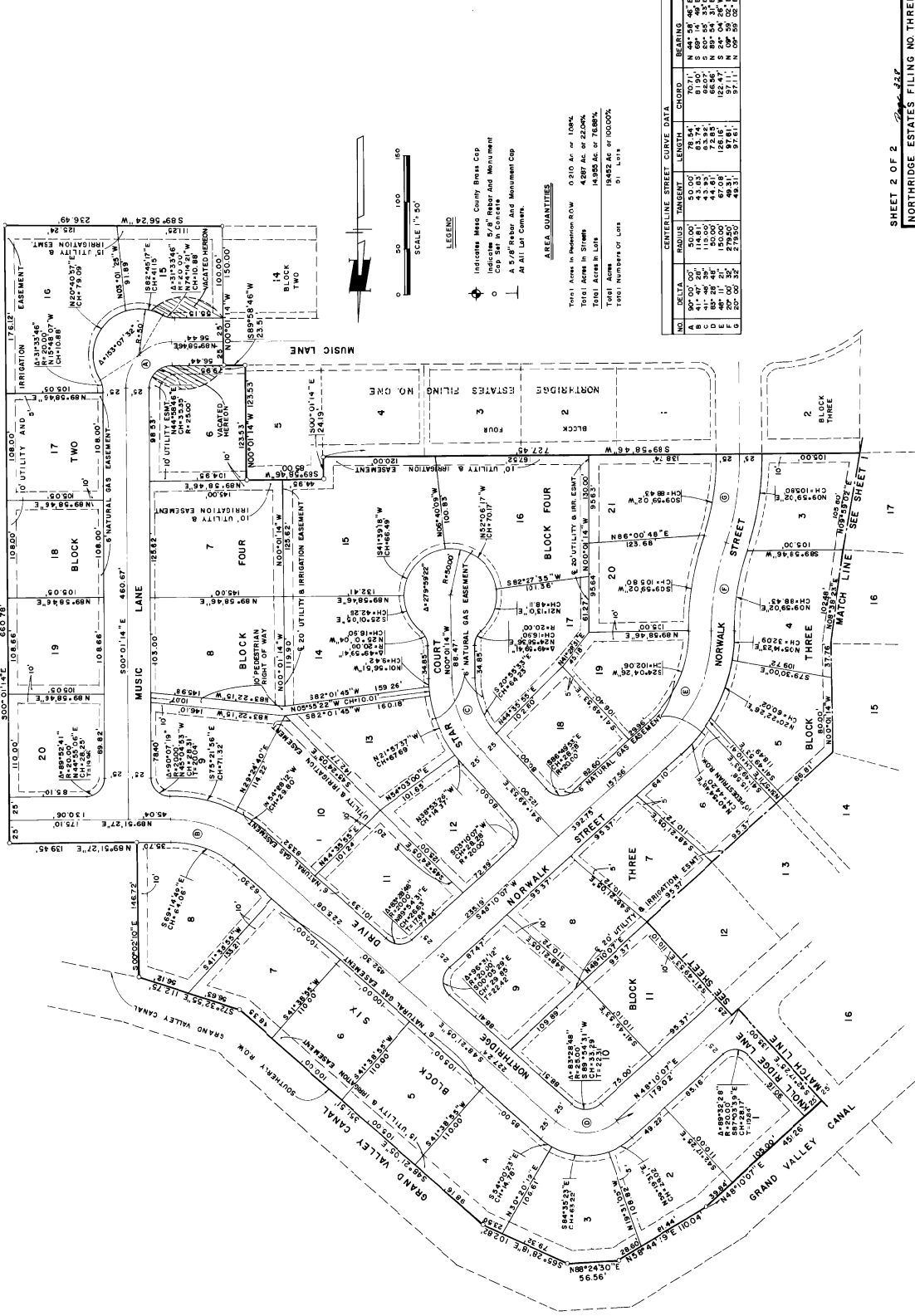


NORTHRIDGE ESTATES FILING NO. THREE



LEGEND

- Indicates Mesa County Break Cap
- Indicates Mesa County Break Cap Set in Concrete
- A 2 1/2" Rebar And Monument Cap At All Lot Corners.

AREA QUANTITIES

Total Area in Reservation ROW 0.210 Ac. or 100%
 Total Acres in Streets 4.297 Ac. or 22.00%
 Total Acres in Lots 14.935 Ac. or 78.00%
 Total Acres 19.452 Ac. or 100.00%
 Total Numbers of Lots 51 Lots

NO.	BETA	RADIUS	CHORD	LENGTH	BEARING
A	50.00'	50.00'	70.71'	70.71'	N 44° 56' 46" E
B	41.47'	41.47'	58.34'	58.34'	S 89° 55' 35" W
C	61.27'	61.27'	86.86'	86.86'	N 89° 55' 35" E
D	88.29'	88.29'	125.00'	125.00'	S 89° 55' 35" W
E	20.00'	20.00'	27.95'	27.95'	N 00° 00' 00" E
F	20.00'	20.00'	27.95'	27.95'	S 89° 55' 35" W
G	20.00'	20.00'	27.95'	27.95'	N 00° 00' 00" E

SHEET 2 OF 2
 NORTH RIDGE ESTATES FILING NO. THREE
 PARAGON ENGINEERING, INC.
 P.O. BOX 827, 827 S. ROAD, AVE. GRAND JUNCTION, COLO. 81507, PHONE 247-3379
 11/11/03